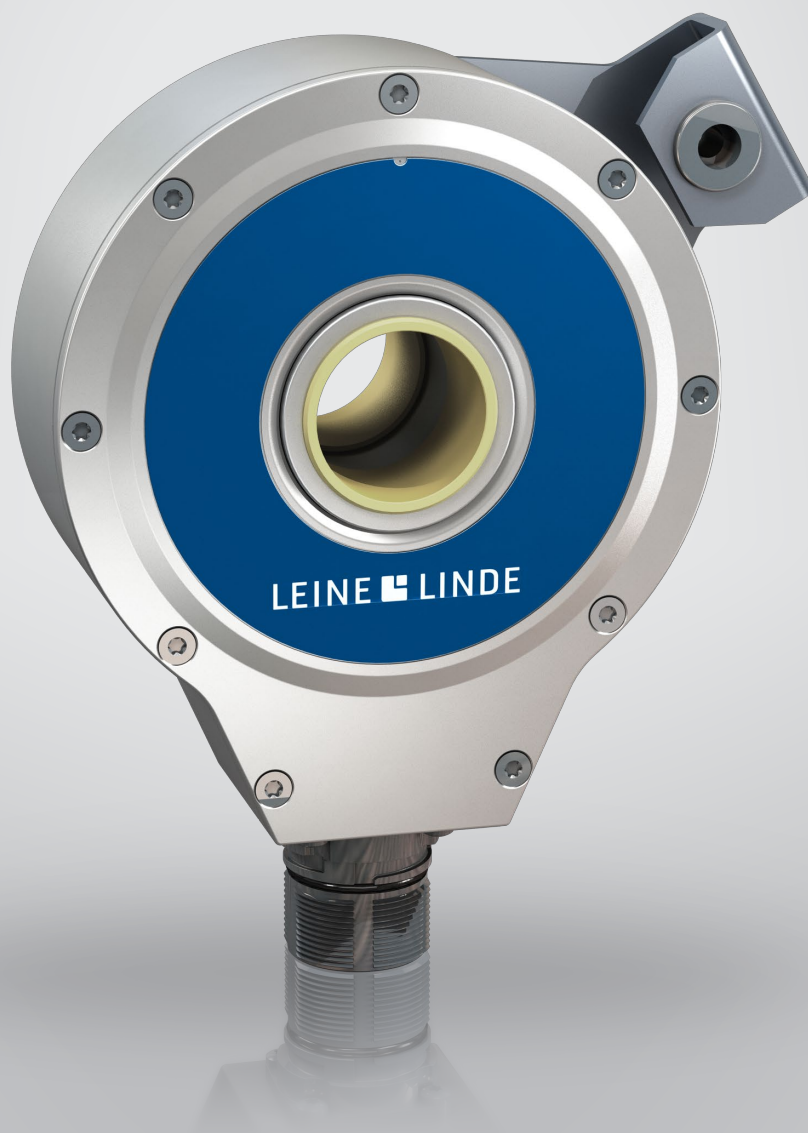


LEINE  LINDE



COMPACT 700 SERIES

ENCODERS FOR DRIVES



Robustness in tight spaces

An encoder is mounted at the rear of a motor and therefore affects the motor's overall length. In tight spaces, the build length can be restricted. Leine & Linde's 700 series is designed to be as short as possible without compromising with the robustness.

Compact design

The 700 series is compact and robust. The series features large hollow shafts up to 30 mm, which means that it can often be mounted directly on the motor's shaft without an intermediate adapter for shaft reduction. This characteristic contributes to minimising the overall build length, and at the same time facilitates mounting. Despite its compactness, the encoder is designed for the tough environments where a typical Leine & Linde product is used. Mechanically it features a dual set of heavy

duty bearings and a well-encapsulated enclosure. Electronically it is built for reliability in tough environments where it is subjected to vibrations and electrical disturbances.

Modularity

Leine & Linde has a wide range of electrical interfaces to choose among – there is always a solution optimised for the particular application where the encoder is needed. The signals can consist of square waves, sine waves or even be optical with the help of a gateway for OptoLink transmission.

On the mechanical side, there is a multitude of different shaft variants that cover the market's standards for both inch- and millimetre-based dimensions.

Modularity

Electronics

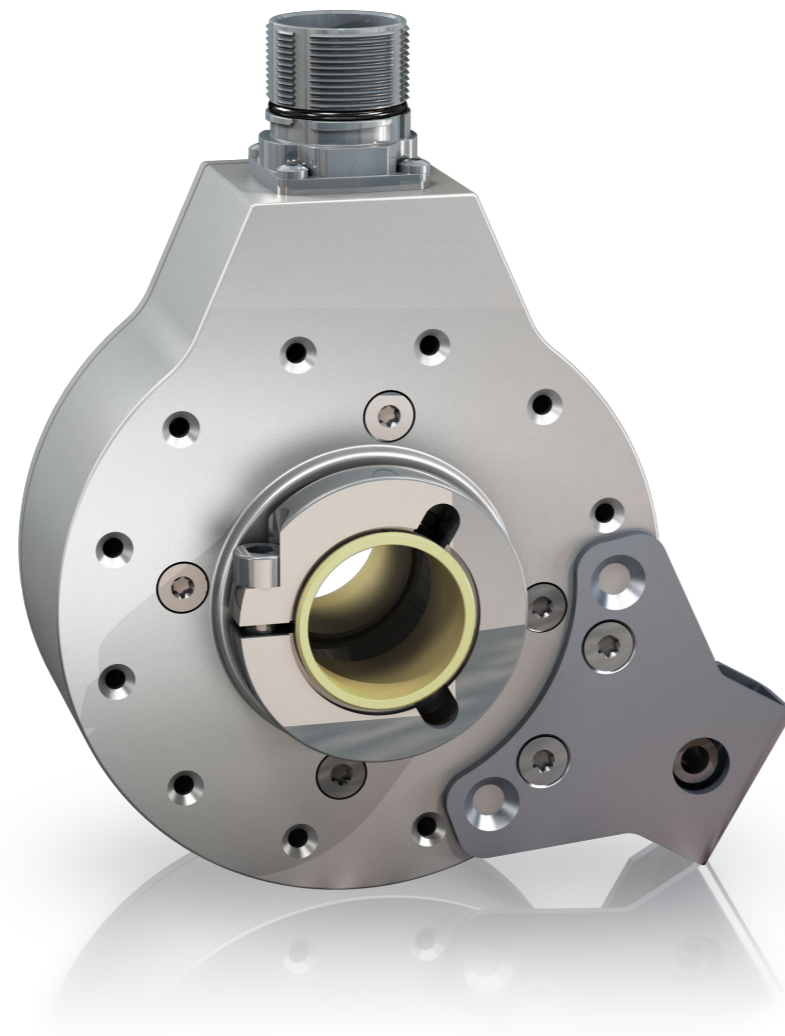
Output interfaces (supply voltage):

- HTL (5-30 Vdc)
- HCHTL (9-30 Vdc)
- TTL (5 Vdc)
- RS422 (9-30 Vdc)
- 1 Vpp (5 Vdc)

Resolution

Incremental pulses per revolution:

- 10 ppr
- 50 ppr
- 100 ppr
- 150 ppr
- 200 ppr
- 256 ppr
- 300 ppr
- 360 ppr
- 400 ppr
- 500 ppr
- 512 ppr
- 600 ppr
- 720 ppr
- 800 ppr
- 900 ppr
- 1000 ppr
- 1024 ppr
- 1200 ppr
- 1250 ppr
- 1800 ppr
- 2000 ppr
- 2048 ppr
- 2400 ppr
- 2500 ppr
- 3072 ppr
- 4000 ppr
- 4096 ppr
- 4800 ppr
- 5000 ppr
- 6350 ppr
- 8192 ppr
- 10000 ppr



Flange

- Torque bracket (120°)
- Tether arm (with insulation)



Shaft

Through-going hollow shafts with insulation:

- Ø25 mm
- Ø20 mm
- Ø16 mm
- Ø14 mm
- Ø12 mm
- Ø1 inch
- Ø5/8 inch
- Ø3/4 inch
- Optional Ø30 mm (without insulation)

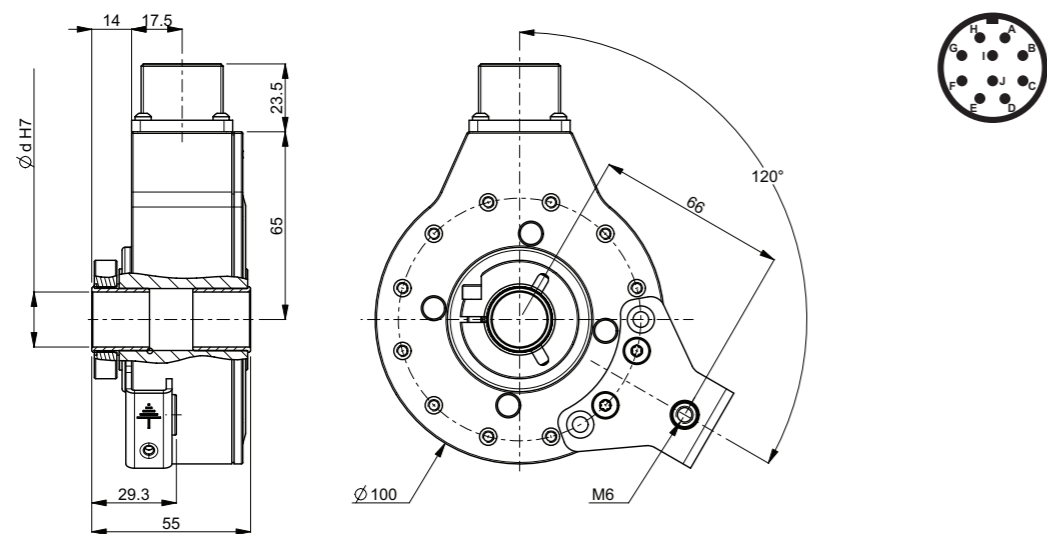
Connection

- M23 connector 12 pin (CCW)
- MS connector 10 pin
- MS connector 7 pin
- Cable (free length)

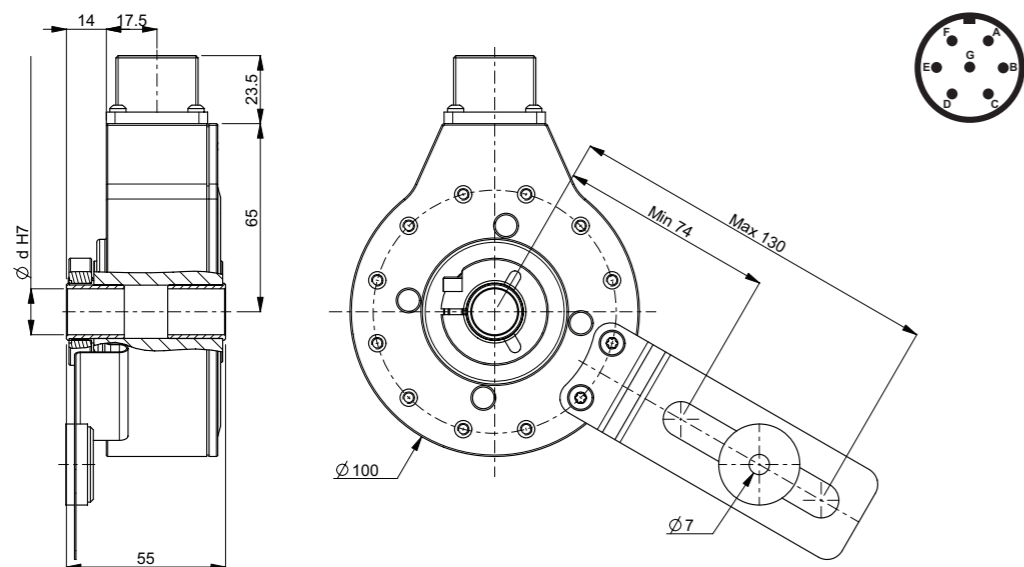
Mechanics

This page offers an overview of the different mechanical variants available in the 700 series. Other variants can be created according to the code key on page 9.

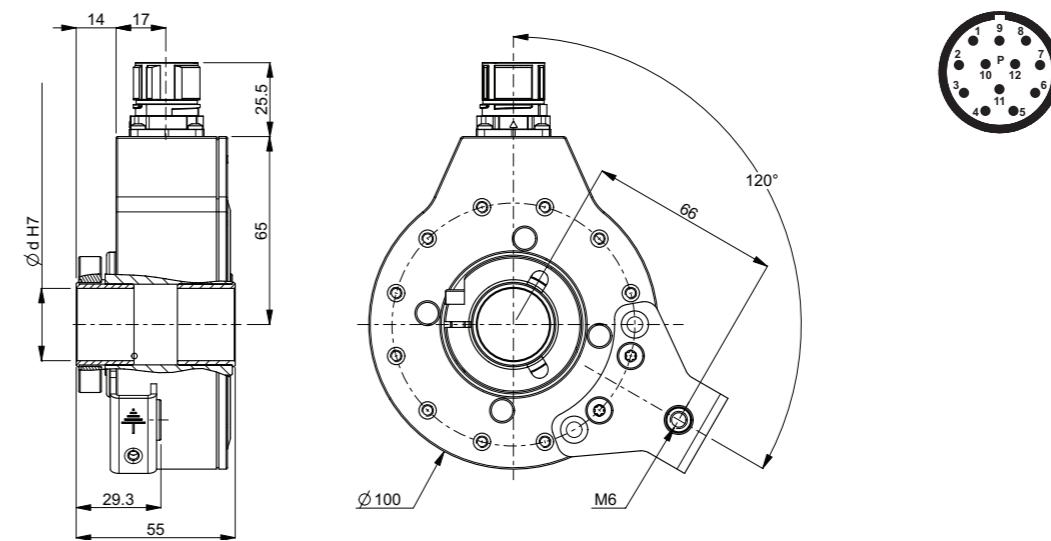
Model CHI 703 with torque bracket and 10 pin MS connector



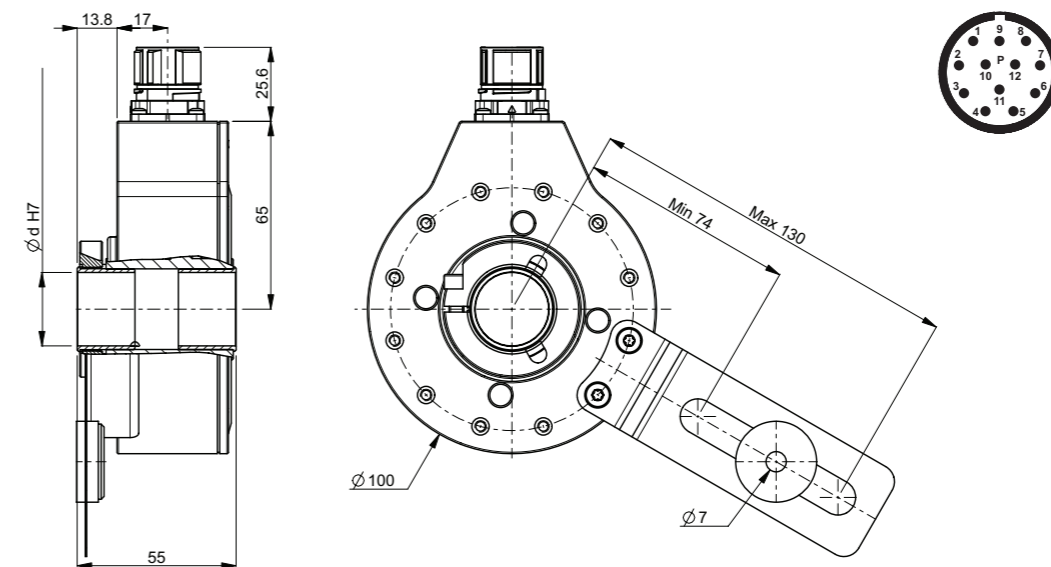
Model CHI 703 with tether arm and 7 pin MS connector



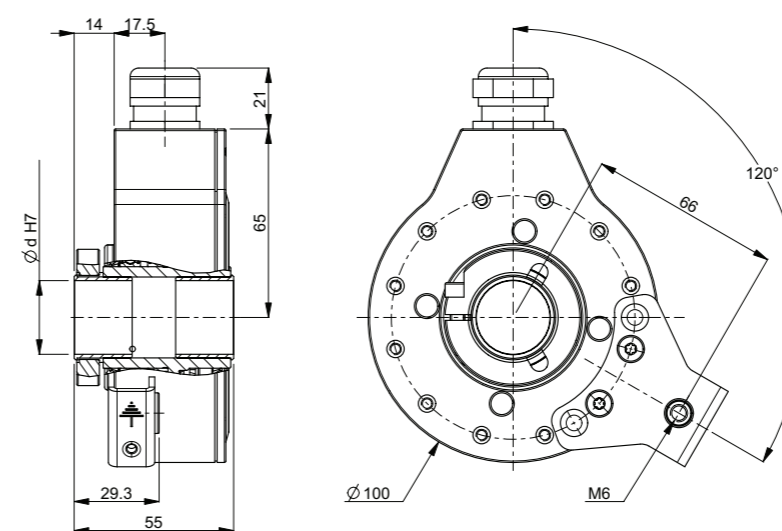
Model CHI 703 with torque bracket and 12 pin M23 connector



Model CHI 703 with tether arm and 12 pin M23 connector



Model CHI 703 with torque bracket and cable



Performance

Technical data (based on HCHTL interface)

Operating temperature	-40..+85 °C *
Ingress protection class [IEC 60529]	IP67 (IP66 at shaft inlet)
Vibration [IEC 60068-2-6]	≤ 200 m/s ²
Shock [IEC 60068227]	≤ 1500 m/s ²
Cover material	Aluminum (anodized)
Weight	Approx. 1000 g
Shaft load (axial / radial)	50 N / 100 N
Rotational speed max	6000 rpm
Shaft material	Stainless steel with insulated peek insert
Short circuit protected	Yes
Polarity protected	Yes
Current consumption	60 mA at 24 Vdc (max. 80 mA)
Output load	± 40 mA
Output frequency max	200 kHz
Cable length max	350 m at 100 kHz
Channel separation	90° el ± 25° el
Dividing error	± 50° el

* Available variants up to +100 °C

Accessories

Mounting accessories	Part number
Torque arm M6	01208014 (specify length upon order)
Mating connector 7 pin MS	00201020
Mating connector 10 pin MS	00201012
Mating connector M23 (CW pin layout for CCW encoder connector)	01209090
Gateways and modules	Part number
Overspeed module, programmable, 0-6000 rpm	1088408-01
CRG OptoLink Transmitter, 9-30 Vdc supply, HTL input	01300320
CRG OptoLink Receiver, 9-30 Vdc supply, HTL output	01300330
CRG OptoLink Receiver, 9-30 Vdc supply, RS422 output	01300332
DMI Converter, HTL or RS422 input, HTL and/or RS422 output signals	1110494-01

Contact us

SWEDEN / HEAD OFFICE

T +46-(0)152-265 00
F +46-(0)152-265 05
info@leinelinde.com

BRAZIL

T +55-19-3367-5657
F +55-19-3367-5658
info@leinelinde.com.br

FINLAND

T +358-(0)9-561 72 00
F +358-(0)9-561 72 020
info@leinelinde.fi

ITALY

T +39-039-596 01 08
F +39-039-971 22 08
info@leinelinde-ltn.it

CHINA

T +86-(021)-52 58 35 66
F +86-(021)-52 58 35 99
info@leinelinde.cn

GERMANY

T +49-(0)40-3176758-60
F +49-(0)40-3176758-65
info@leinelinde.de

SOUTH KOREA

T +82-(0)51-746 5420
F +82-(0)51-746 5421
info@leinelinde.co.kr

DENMARK

T +45-862-308 34
info@leinelinde.dk

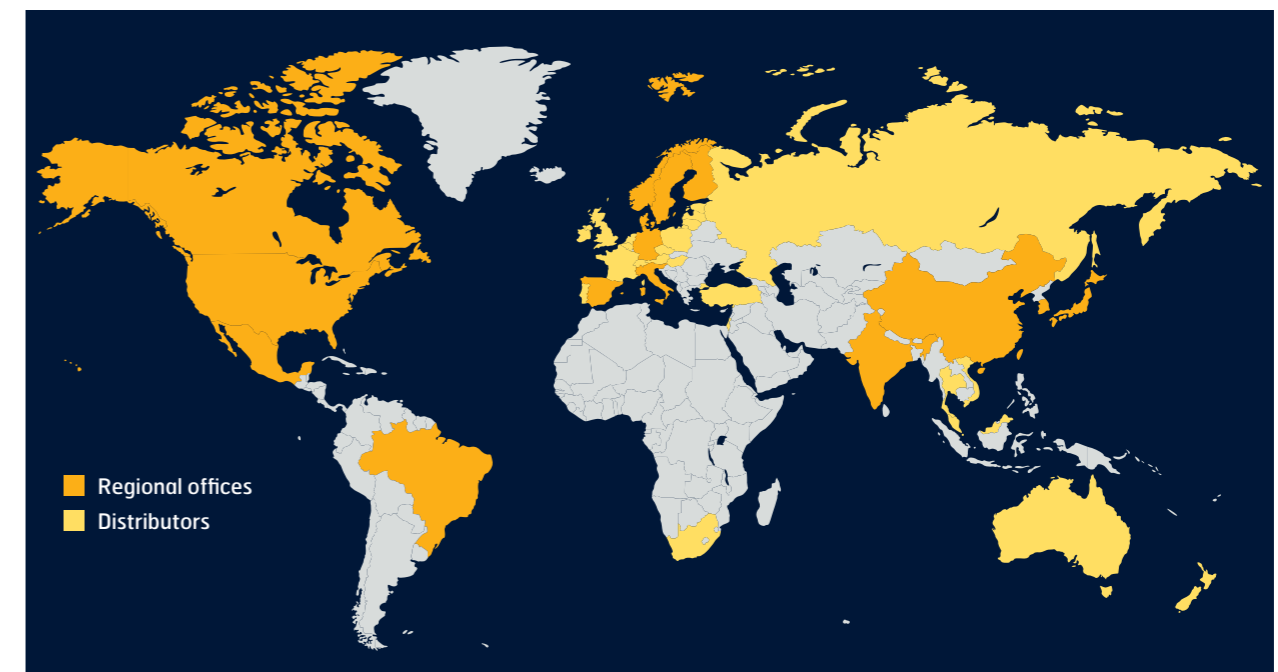
INDIA

T +91-11-2617 2504
F +91-11-4058 2516
info@leinelinde.in

SPAIN

T +34-93-574 23 02
F +34-93-560 57 60
info@leinelinde.es

Leine & Linde's worldwide presence. Read more at www.leinelinde.com



The best encoders are those you never have to think about. Those that simply do their job – year after year. Leine & Linde develops and manufactures customised encoder solutions for demanding environments, advanced measuring systems for accurate feedback of speed and position.

LEINE  LINDE

+46-(0)152-265 00 www.leinelinde.com