

# Series Z58-600

Universal Single Axis Position Indicator  
for incremental and absolute Measuring Systems



- Indicator for evaluation of incremental or absolute measuring systems
- Proven standard functions, e. g. multiplication factor, reference value, tool-offset, four-edge evaluation and inch/mm switching
- 6 digit LED display (14 mm high) with brightness control
- 3 external +24 V control inputs (reset, reference, tool-offset)
- Switching function via two normally open relay outputs
- Optional analog output 0 ... 10 V or 0 (4) ... 20 mA
- Power supply 24 VDC (optionally 115 or 230 VAC)
- Panel housing or optional built-on housing
- Serial RS232 interface

# Z58 - Universal Position Indicator for incremental and absolute Encoders

## General:

The universal ELGO position indicator Z58-600 is suitable for detecting lengths and positions. The device has 2 programmable pre-selections in order to control 2 internal normally open relays.

Both conventional incremental encoders and incremental or absolute ELGO measuring systems can be connected as input signals. It is therefore a universal device which can visualize the information of numerous ELGO standard measuring systems.

With the Z58-600, ELGO is able to offer a complete solution concerning signal detection and visualization.

The predecessor type Z54 can be replaced by Z58 (except for a few special devices). Please consider the pin assignment during Z54 replacement, because with Z58 additional plugs for news encoder types are available .



Panel housing (standard)



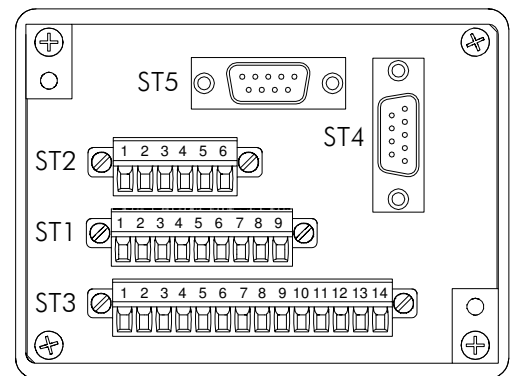
Built-on housing (option AG)

## Essential Features:

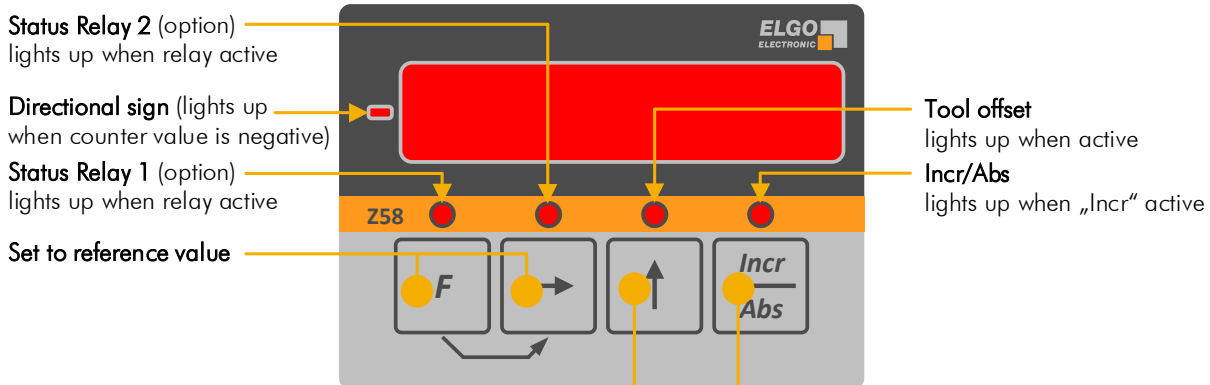
- Power supply:
  - 24 VDC (standard)
  - 115/230 VAC with ext. ELGO power pack NG24.0 possible
  - 115 VAC with AC-version Z58-654-115-X possible\*
  - 230 VAC with AC-version Z58-654-230-X possible\*
- Panel mounting housing (cut-out = 93 x 67 mm)  
Install depth = 73 mm (110 mm with D-SUB connectors)
- Optional built-on housing available (option AG)
- Programmable preset-limits with 2 shutter relays
- RS232 interface (transmission of actual value)
- All connections are pluggable

\*) Limited range of functions and different rear panel

## Terminal Assignment (rear)



## Front with Keys and Status LEDs

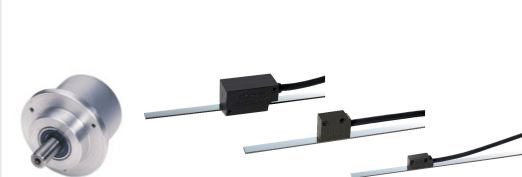


Tool offset\* Absolute / Relative measurement\*

\*) only in „Normal Mode“

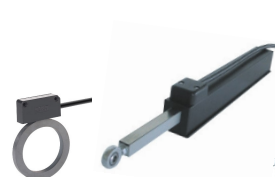
## Compatible Measuring Systems

Incremental encoders:



Rotary encoders

ELGO EMIX, LMIX, DMIX, GMIX



ELGO RMIX

ELGO PMIX



ELGO FMIX

Absolute encoders:



ELGO EMAX/FEMAX

# Z58 - Universal Position Indicator for incremental and absolute Encoders

## Technical Data:

Mechanical Data	
Housing	panel housing (standard) or built-on housing (option A)
Housing material	aluminium, black
Housing dimensions (W x H)	panel housing (standard): W x H x D = 96 x 72 x 70 mm built-on housing (option A): W x H x D = 71.3 x 102.6 x 95 mm
Panel cut out (W x H)	W x H = 93 x 67 mm
Keyboard	foil with short stroke keys
Installation depth	78 mm (including screw terminals) 115 mm (including D-SUB connector)
Electrical Data	
Display	6-digits LED (red, digit height: 14 mm)
Accuracy	± 1 Digit
Power supply voltage	Standard: 24 VDC ± 20 % Version Z58-654-115-X-A: 115 VAC Version Z58-654-230-X-A: 230 VAC
Current consumption	70 mA (without measuring system)
Signal inputs	HTL / TTL / RS422 (depends on order)
Incremental channels	A, B resp. A, A', B, B', Z, Z'
Absolute channels	RX, RX', TX, TX'
Input frequency	max. 100 KHz (optionally 500 KHz)
External inputs	3 digital inputs (set functions) characteristics: PNP, active high switching voltage: +24 VDC input current: max. 10 mA
Relay outputs	2 potential-free shutters (24 VDC / max. 1 A)
Analog outputs (option)	12 Bit, 0... 10 VDC (max. = 5mA) or 0 (4)... 20mA (Rmax = 200 Ω)
Interfaces	RS232 (transmission of actual value)
Connections	pluggable screw terminals and 9 pin (female) D-SUB connectors
Data memory	EEPROM
Optional accessories	external power pack NG24.0 for 115/230 VAC supply
Environmental conditions	
Operating temperature	0 ... +50 °C
Storage temperature	-20 ... +80 °C
Humidity	max. 80 %, non-condensing
Protection class (front)	IP43 (installed state)
Protection class (rear)	IP40

## Type Designation:

For orders please use the following code:

Z58 -  $\overline{\text{A}}\overline{\text{A}}\overline{\text{A}} - \overline{\text{B}}\overline{\text{B}}\overline{\text{B}} - \overline{\text{C}} - \overline{\text{D}}\overline{\text{D}}\overline{\text{D}}\overline{\text{D}}$

### A SN Number

- 600 = ELGO standard
- 601 = first special version
- 602 = second special version etc.

### B Power Supply Voltage

- 024 = 24V DC (± 20 %)

### C Measuring System (Channels - Supply - Levels - F<sub>max</sub>)

- 1 = A, B, Z - 24 V - HTL - 100 KHz
- 2 = A, A', B, B', Z, Z' - 24 V - TTL - 100 KHz
- 3 = A, A', B, B', Z, Z' - 5 V - TTL - 100 KHz
- 4 = compatible to absolute encoder FMAX
- 5 = compatible to absolute encoder EMAX
- 7 = A, B, Z - 5 V - TTL - 100KHz
- 8 = A, A', B, B', Z, Z' - 24 V - TTL - 500 KHz
- 9 = A, A', B, B', Z, Z' - 5 V - TTL - 500 KHz
- 10 = A, B, Z - 24 V - HTL - 500 KHz

### D Options\*

- A = Built-on housing
- D = 9-pin. (male) D-SUB for LMIX1/EMIX1
- F = analog output 0... 10 V
- G = analog output 0... 20 mA
- H = analog output 4... 20 mA

\* Multiple indications possible

Example:

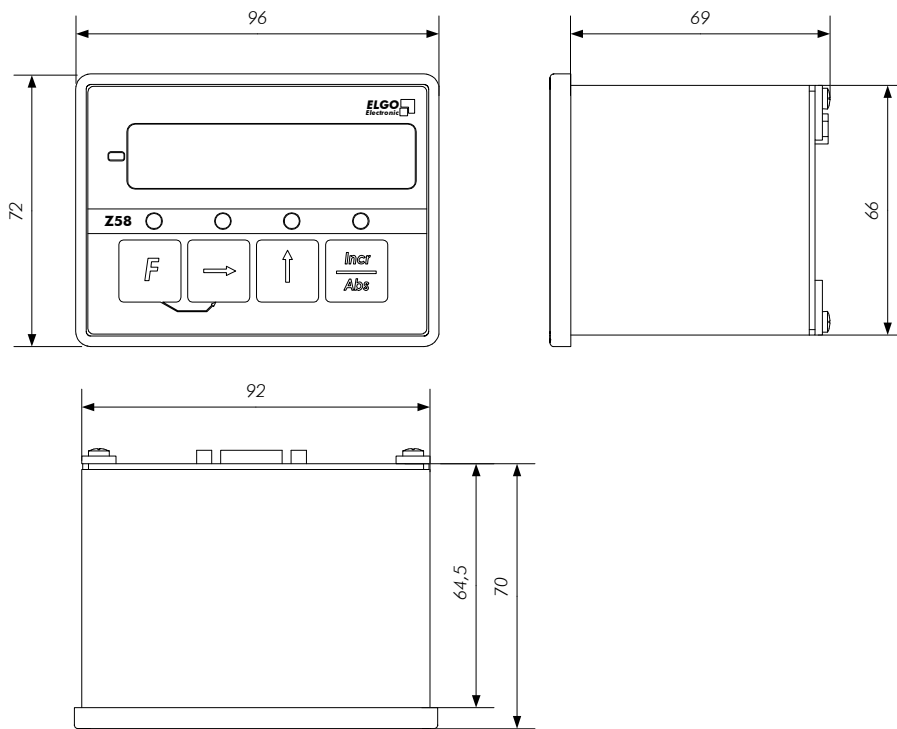
Z58 -  $\overline{600} - \overline{024} - \overline{1} - \overline{A}$   
A A A - B B B - C - D D D D D

ELGO standard Z58 indicator with 24 VDC power supply voltage, HTL levels with max. 100 KHz input frequency and built-on housing.

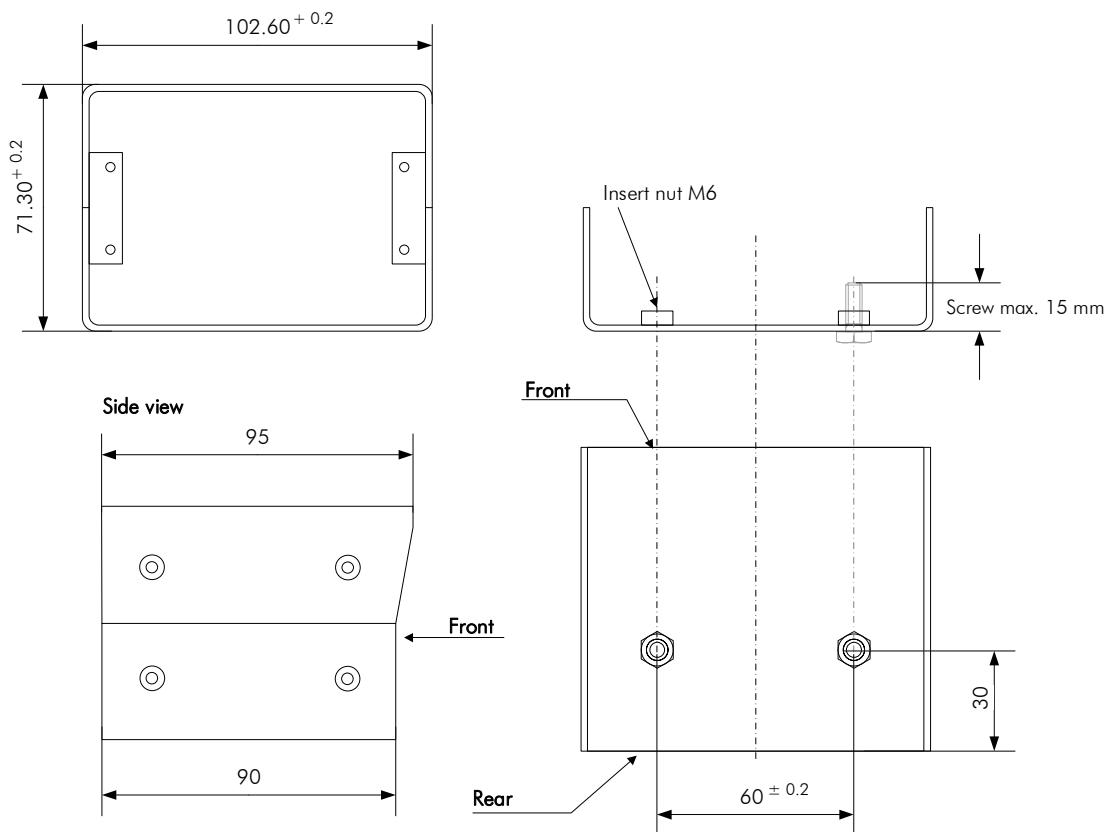
Your order:

Z58 -  $\overline{\text{A}}\overline{\text{A}}\overline{\text{A}} - \overline{\text{B}}\overline{\text{B}}\overline{\text{B}} - \overline{\text{C}} - \overline{\text{D}}\overline{\text{D}}\overline{\text{D}}\overline{\text{D}}$

## Dimensions of Panel Housing (Standard):



## Dimensions of Built-on Housing (Option AG):



## Accessories for Z58:

Order Designation	Description
NG24.0	External 24 VDC power pack (primary 115/230 VAC) for supply with AC voltage. With two mounting holes as well as a snap-on device for top hat rail mounting.

